

Perennials:

- 6 Blue Star (*Amsonia tabernaemontana*)
- 5 False Sunflower (*Heliopsis helianthoides*)
- 7 New England Aster (*Symphyotrichum novae-angliae*)
- 6 Swamp Milkweed (*Asclepias incarnata*)
- 3 Swamp Sunflower (*Helianthus angustifolius*)

Grasses:

- 12 Switchgrass (*Panicum virgatum*)

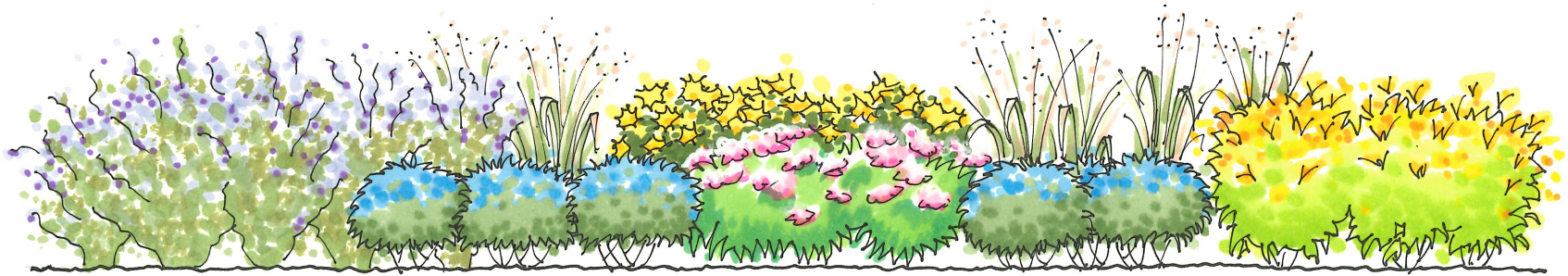


College of Agricultural &
Environmental Sciences
UNIVERSITY OF GEORGIA



Firefly Garden #3

Drawn & Rendered by Clare Johnston



Garden 3 Elevation

This border garden has options! The original garden is 10' wide by 34' long, with option to add on 8'-10' on either or both ends. You can use one or both the add-ons to extend your garden 43' to 52' long. These perennials and grasses will be happy in full sun to part shade.